

## JS Auto Range - Tracked Excavators JS85

[Section 1 - General Information](#)

[Section 2 - Operator's Manual](#)

[Section B - Body and Framework](#)

[Section C - Electrics](#)

[Section E - Hydraulics](#)

[Section F - Transmission](#)

[Section J - Track & Running Gear](#)

[Section K - Engine](#)



Publication No.  
**9813/3750-01**



Copyright © 2004 JCB SERVICE. All rights reserved. No part of this publication may be reproduced, stored in a retrieval system, or transmitted in any form or by any other means, electronic, mechanical, photocopying or otherwise, without prior permission from JCB SERVICE.

## General Information

Service Manual - JS Auto Range - Tracked Excavators JS85

[Section 1 - General Information](#)

[Section 2 - Operator's Manual](#)

[Section B - Body and Framework](#)

[Section C - Electrics](#)

[Section E - Hydraulics](#)

[Section F - Transmission](#)

[Section J - Track & Running Gear](#)

[Section K - Engine](#)



Publication No.  
**9813/3750-01**



Copyright © 2004 JCB SERVICE. All rights reserved. No part of this publication may be reproduced, stored in a retrieval system, or transmitted in any form or by any other means, electronic, mechanical, photocopying or otherwise, without prior permission from JCB SERVICE.



<b>Contents</b>	<b>Page No.</b>
<b>Introduction</b>	
Identifying Your Machine .....	1-1
<b>Safety</b>	
Introduction .....	1-3
<b>Use</b>	
Introduction .....	1-5
Scope .....	1-6
Personnel .....	1-6
Applications .....	1-6
Newest Data .....	1-6
Format .....	1-7
Left Side, Right Side .....	1-8
Hydraulic Schematic Codes .....	1-9
Colour Codes .....	1-9
<b>Routine Maintenance</b>	
Maintenance Schedules .....	1-11
<b>General Procedures</b>	
Introduction .....	1-13
Parking the Machine and Making it Safe .....	1-14
Venting the Hydraulic Pressure .....	1-15
Connecting/Disconnecting Hydraulic Hoses .....	1-16
Battery Disconnection/Connection .....	1-17
Removing and Replacing Components .....	1-18
Preparation .....	1-18
Original Components .....	1-18
New Components .....	1-18
Torques and Fixings .....	1-18
Battery Charging System Precautions .....	1-19
Gas Hydraulic Bladder Accumulators .....	1-20
Replacement .....	1-20
Charging .....	1-20
<b>Service Consumables</b>	
Introduction .....	1-23
Sealing and Retaining Compounds .....	1-24
<b>Torque Settings</b>	
Introduction .....	1-25
Zinc Plated Fasteners and Dacromet Fasteners .....	1-26
Introduction .....	1-26
Bolts and Screws .....	1-26
Hydraulic Connections .....	1-30
'O' Ring Face Seal System .....	1-30
'Torque Stop' Hose System .....	1-33
'Positional Type' Hydraulic Adaptors .....	1-34
Fitting Procedure .....	1-34
<b>Service Tools</b>	
Numerical List .....	1-35

<b>Contents</b>	<b>Page No.</b>
Tool Detail Reference .....	1-36
Body and Framework .....	1-36
Electrics .....	1-40
Hydraulics .....	1-41
Special Tool for removal of the Brake Piston .....	1-46
Hydraulics .....	1-47
Hydraulic Rams Dismantling and Assembly .....	1-47
Boom Cylinder parts break down .....	1-48
Arm Cylinder parts break down .....	1-50
Bucket Cylinder parts break down .....	1-52
Dozer Blade parts break down .....	1-54

# Introduction

## Identifying Your Machine

For information about identifying your machine and its main components, refer to ***Section 2, About the Machine, Machine and Component Identification.***



# Section 1 - General Information

## Introduction

Identifying Your Machine

---

Page left intentionally blank

# Safety

## Introduction

In this manual and on the machine there are safety notices.

The safety notices have different signal words as follows:

- DANGER
- WARNING
- CAUTION
- Notice

For an explanation of the safety notice signal words, refer to **Section 2, Introduction, Safety**.

For general safety notices, refer to **Section 2, Introduction, Safety**.

For maintenance safety notices, refer to **Section 2, Maintenance, Maintenance Safety**.

For safety notices specific to maintenance procedures, refer to the relevant procedure.

If you do not fully understand a safety notice ask your employer to explain it.





Page left intentionally blank

# Use

## Introduction

This topic contains information about the structure of the manual and how to use the manual.

⇒ [Scope \(□ 1-6\)](#)

⇒ [Personnel \(□ 1-6\)](#)

⇒ [Applications \(□ 1-6\)](#)

⇒ [Newest Data \(□ 1-6\)](#)

⇒ [Format \(□ 1-7\)](#)

⇒ [Left Side, Right Side \(□ 1-8\)](#)

⇒ [Hydraulic Schematic Codes \(□ 1-9\)](#)

⇒ [Colour Codes \(□ 1-9\)](#)

---

## Scope

### Personnel

This manual is designed for the benefit of JCB Distributor Service Engineers who are receiving, or have received, training by JCB Technical Training Department.

These personnel should have a sound knowledge of workshop practice, safety procedures, and general techniques associated with the maintenance and repair of hydraulic earthmoving equipment. Finally, please remember above all else SAFETY MUST COME FIRST!

### Applications

This manual contains data relevant to a range of machines. Make sure you reference the data for the correct machine.

### Newest Data

From time to time new machines, systems or devices require the manual to be re-issued. Make sure you have the newest issue.

Always check the on-line JCB data system for relevant technical information.

## Format

The manual is compiled in sections, the first two are numbered and contain information as follows:

- 1 **General Information** - The section includes general information such as torque settings and service tools.
- 2 **Operator Manual** - The section contains a copy of the applicable machine Operator Manual. Refer to this section when necessary for information about the main machine components and controls. Refer also to the safety and daily / weekly maintenance information.

The remaining sections are alphabetically coded and deal with dismantling, overhaul etc. of specific components, for example:

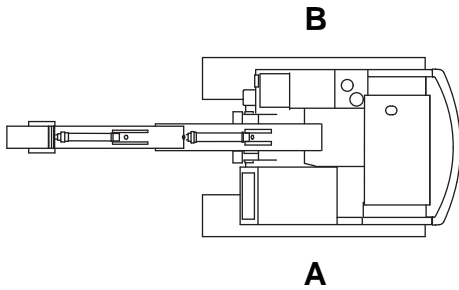
- A **Attachments**
- B **Body and Framework...etc.**

Each section contains data such as technical data, descriptions, fault finding and test procedures.

Some sections contain **procedures and specifications for different variants**. This happens because of market requirements, or when the machine specification changes after a period of time. Where applicable, a table contains information to help you identify the correct data and procedures.

### Left Side, Right Side

In this manual, 'left' **A** and 'right' **B** mean your left and right when you are seated correctly in the machine.










**Fig 1.**

T017280

## Hydraulic Schematic Codes

### Colour Codes

The following colour coding, used on illustrations to denote various conditions of oil pressure and flow, is standardised throughout JCB Service Publications.

	<b>Red</b>	f: Pressure generated from operation of a service. Depending on application this may be anything between neutral circuit pressure and LSRV operating pressure.
	<b>Pink</b>	<b>Pressure:</b> Pressure that is above neutral circuit pressure but lower than that denoted by Red.
	<b>Orange</b>	<b>Pilot:</b> Oil pressure used in controlling a device (Pilot).
	<b>Blue</b>	<b>Neural:</b> Neutral circuit pressure.
	<b>Green</b>	<b>Exhaust:</b>
	<b>Light Green</b>	<b>Cavitation:</b> Oil subjected to a partial vacuum due to a drop in pressure (cavitation).
	<b>Yellow</b>	<b>Lock Up:</b> Oil trapped within a chamber or line, preventing movement of components (lock up).



Page left intentionally blank

**Thanks for your reading.**

**Please click here to download complete manual instantly.**

**And can also choose other manuals.**

**Feel free --->write to me with any questions.**

**Our service email:**

**manuals007@hotmail.com**